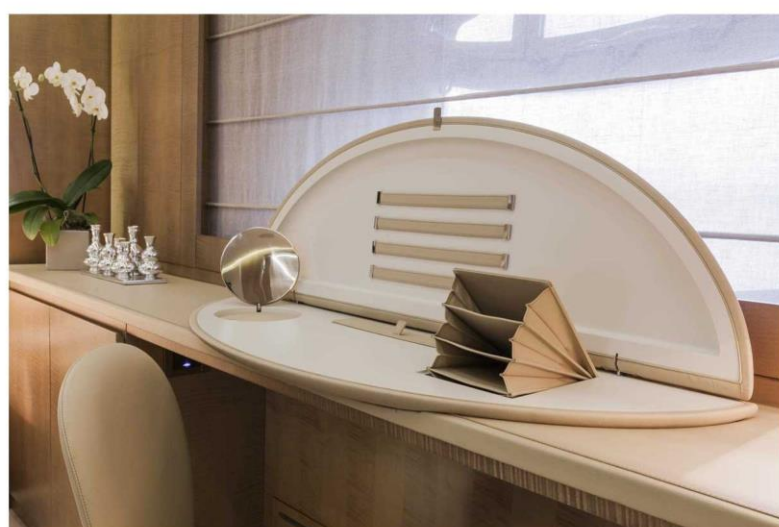
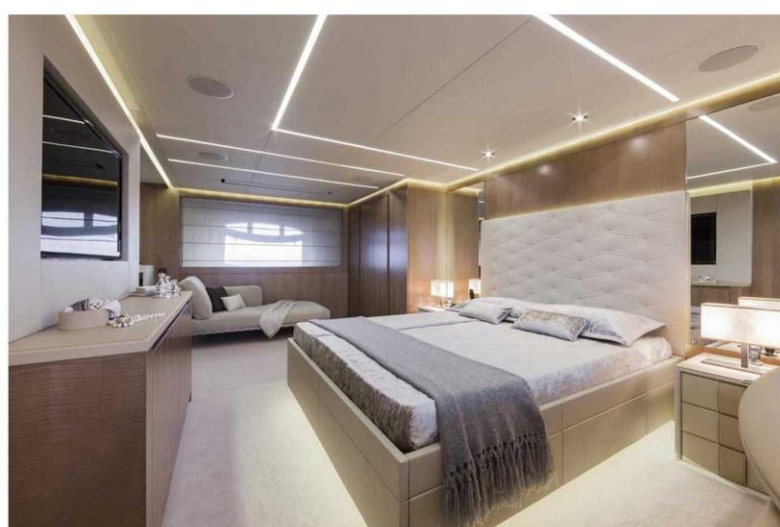


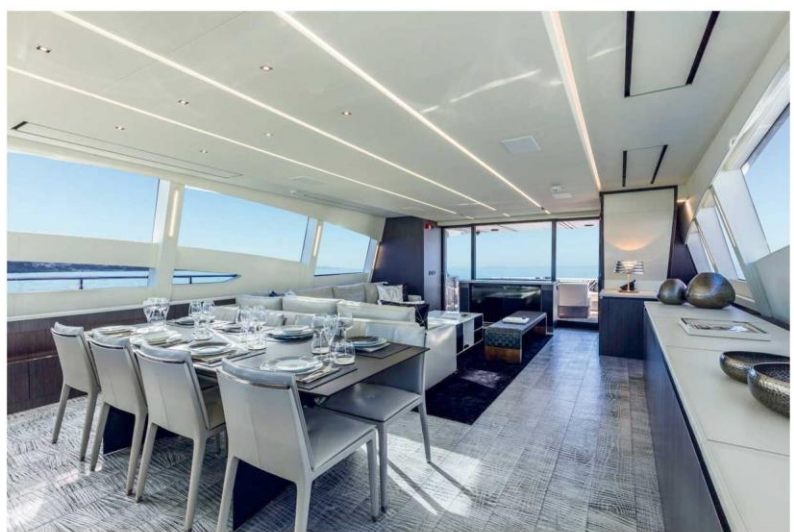


———— Pershing 108 ————

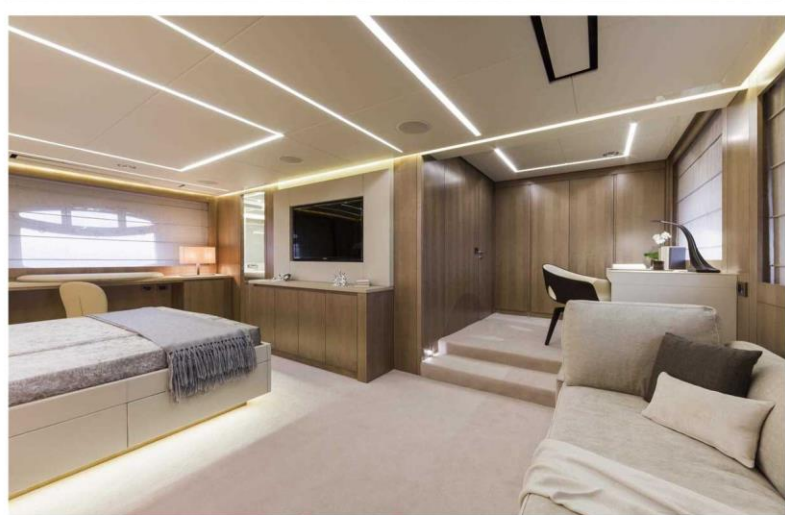
Versatile, high-performance and elegant, the Pershing 108 was created to blend speed, comfort and fuel consumption efficiency. The three surface propellers make this yacht a champion for its range and low noise. But it is also a masterpiece with a speed of over 42 knots that can always impart the emotions of the classic Pershing thrill.

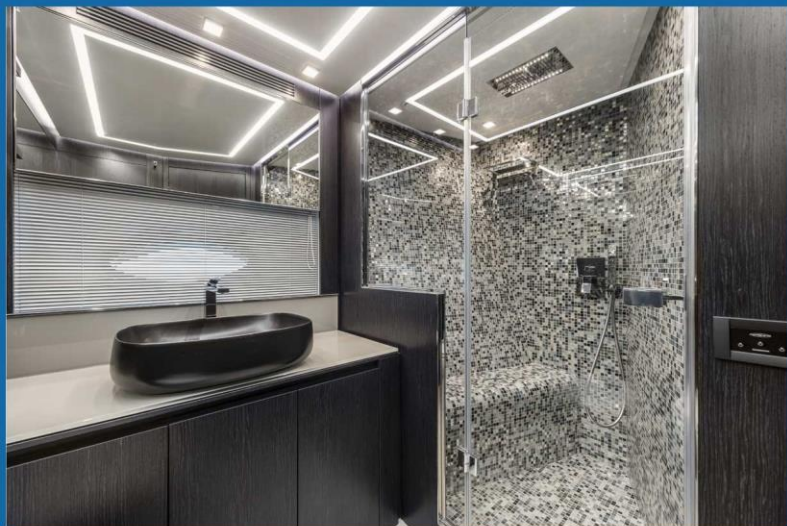


The characteristic Pershing style adapts itself to offer spaces that can be customized to reflect the owner's every need. The large cockpit can accommodate up to 10 people both in the day and in the evening.



The bow holds a C-shaped sofa and a table that can be lowered to the seat level to create a single large sun pad, while the spacious sun deck lets you really enjoy every relaxation moment on board.





PERSHING



108

Pershing 108 is in the forefront also in its engine. This yacht is the first three-engine model of the fleet, combining excellent performances with environmental friendliness. Using only the central engine, the Pershing 108 can sail up to 1070 nautical miles at a speed of 10 knots.



At maximum power, the three engines can exceed 42 knots while remaining below the threshold of 75 dBA.

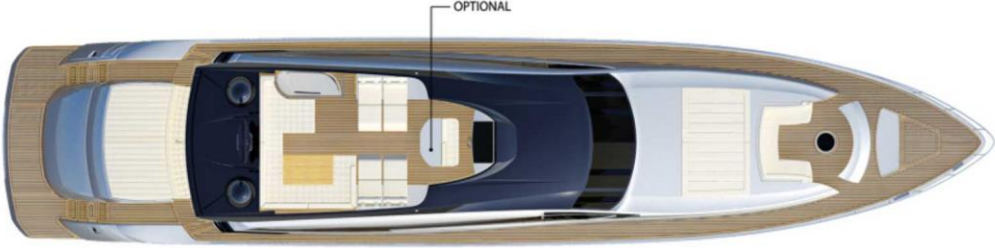
A unique, inimitable masterpiece: the interior design is conceived for the most versatile customization. In the standard layout, the Pershing 108 includes 4 guest cabins and 3 crew cabins, but this can vary, too, in order to suit the owners' needs. With utmost attention to detail, the furnishings are by Poltrona Frau and the best Italian design brands.



LAYOUT



Profile



Sun deck



Main deck



Lower deck



Lower deck opt

TECHNICAL DATA

Pershing 108	MTU 16V 2000 M96L 4 cabins + 3 crew
LOA	33,23 [m] – 109 ft 0 in
LH	25,84 [m] – 84 ft 9 in
MAX BEAM	6,70 [m] – 22 ft 0 in
DRAFT	1,83 [m] – 6 ft 0 in
UNLADEN DISPLACEMENT	98.100 [kg] – 216,273 [lbs]
LADEN DISPLACEMENT	112.680 [kg] – 248,417 [lbs]
FUEL	12.000 [l] – 3,170 [US gal]
WATER	2.000 [l] – 528 [US gal]
PEOPLE ON BOARD	20
ENGINE	MTU 16V 2000 M96L
MAX SPEED	42 [kn]
CRUISE SPEED	37 [kn]

Blackfish Marine

Customize your luxurious yacht life!



PHONE:

800-796-8081

604-669-8081

(Mon - Fri 9:30AM - 5:30PM)



WEBSITE

www.blackfishmarine.com

Yacht Sale

Yacht Charter

Driving training

Yacht Entertainment

Yacht Management

Maintenance



Riva

PERASHING



CARVER
YACHTS



BLACKFISH MARINE
LUXURY YACHT SALES