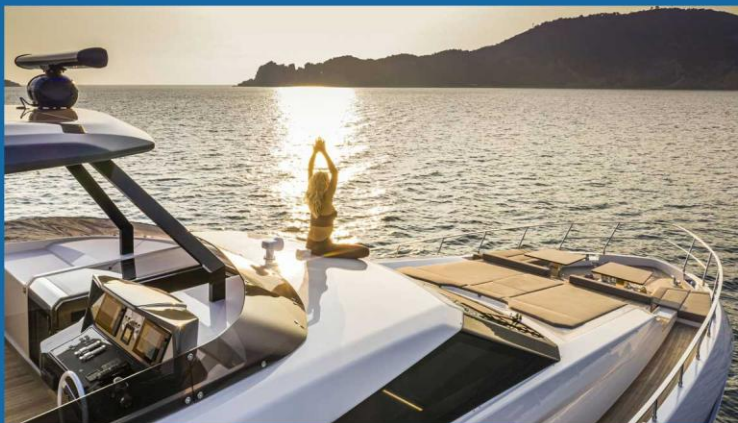




———— Ferretti 920 ————

Striking lines, unmistakable style, charm and performance – all in one remarkable yacht. This highly innovative maxi-flybridge is designed with an impressive collection of spaces, featuring sumptuous décor, multipurpose relaxation areas and a classic-contemporary interior feel. She is the quintessence of wellbeing and style.

A boat with an ambition for innovation to match her grand scale, the Ferretti Yachts 920 exudes the easy power of a nautical giant.



EXTERIORS



This fantastic flybridge is a true design original –the first in the range to embrace the wide-body concept. Her majestic presence makes a striking first impression.



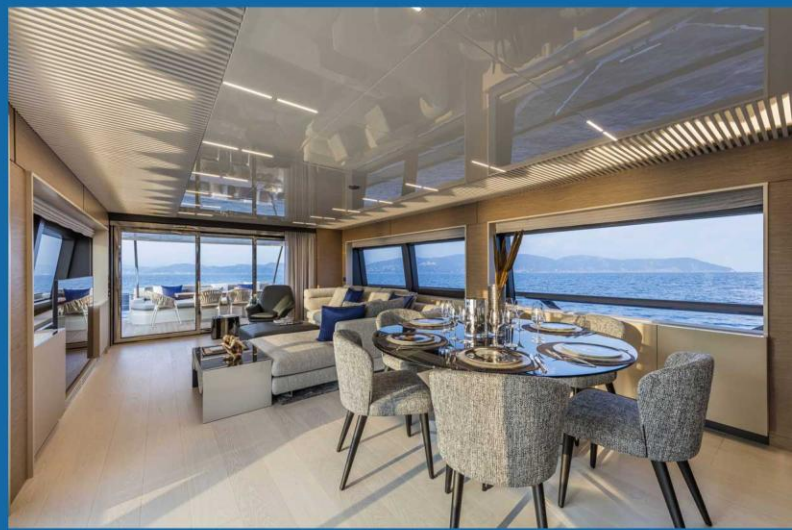


The eye-catching profile is underlined by the detailing on the gunwale, which extends beyond the bulwark walkways and intersects the master-cabin window like a blade. Yet with a hull length of 23.98 metres, she can be registered as a pleasure boat.



INTERIORS

Her dynamic, irrepressible lines further develop the style tenets that have earned international plaudits for the new models launched in recent years in a complete revamp of the fleet. Besides the striking raised bow, the external spaces also impress with an array of areas to relax in amid the resplendent decor.

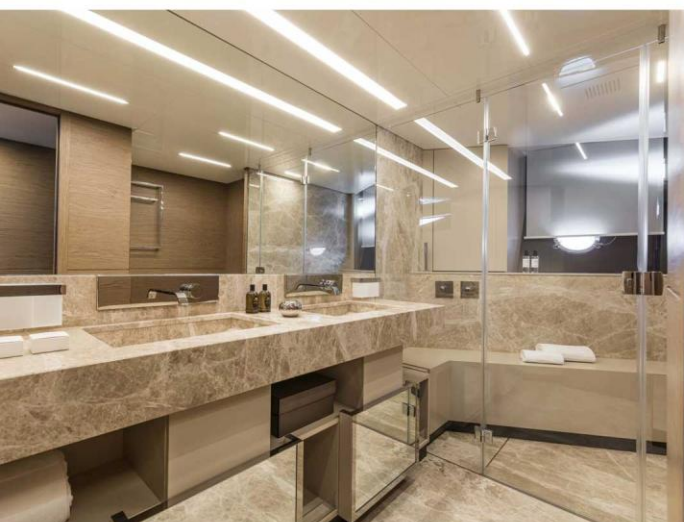
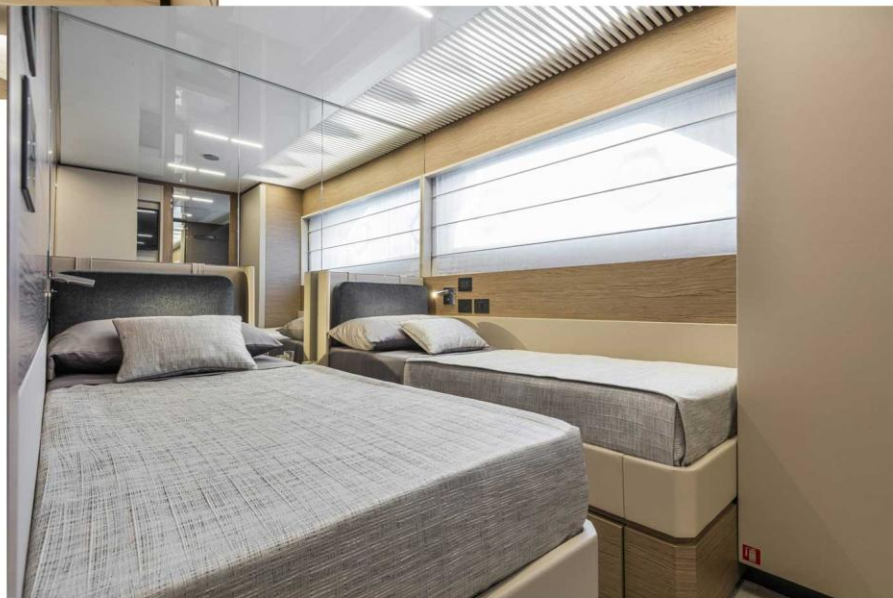


And the remarkable interiors are as roomy and elegant as you'd expect to find on a superior class of yacht.



LOWER DECK

The recently introduced PURE version underlines the authentic Ferretti Yachts style – warm, enveloping and lavishly appointed with prestige materials and sophisticated details. This exquisite emblem of the brand is acquiring a cult following among boating enthusiasts and connoisseurs alike.





FERRETTI 920



TECHNICAL DATA

FERRETTI 920	MTU 12V 2000 M96L 4 CABINS & 3 CREW	MTU 16V 2000 M86 4 CABINS & 3 CREW	MTU 16V 2000 M96 4 CABINS & 3 CREW
LOA	28,49 [M] – 93 FT 6 IN		
LH	23,98 [M] – 78 FT 8 IN		
MAX BEAM	6,78 [M] – 22 FT 3 IN		
DRAFT	2 [M] – 6 FT 7 IN		
UNLADEN DISPLACEMENT	85.000 [KG] – 187,393 [LBS]		
LADEN DISPLACEMENT	99.000 [KG] – 218,258 [LBS]		
FUEL	6.750 [L] – 1,783 [US GAL]		
WATER	1.320 [L] – 349 [US GAL]		
PEOPLE ON BOARD	20		
ENGINE	MTU 12V 2000 M96L	MTU 16V 2000 M86	MTU 16V 2000 M96
MAX SPEED	26 [KN]	28 [kn]	30 [KN]
CRUISE SPEED	22 [KN]	24 [KN]	26 [KN]

Blackfish Marine

Customize your luxurious yacht life!

PHONE:

833-775-5476

604-669-8081

(Mon - Fri 9:30AM - 5:30PM)



WEBSITE

www.blackfishmarine.com

Yacht Sale

Yacht Charter

Driving training

Yacht Entertainment

Yacht Management

Maintenance


FERRETTI

Riva

PERSHING


MARQUIS

CARVER
YACHTS


SEALINE

BLACKFISH MARINE
LUXURY YACHT SALES