



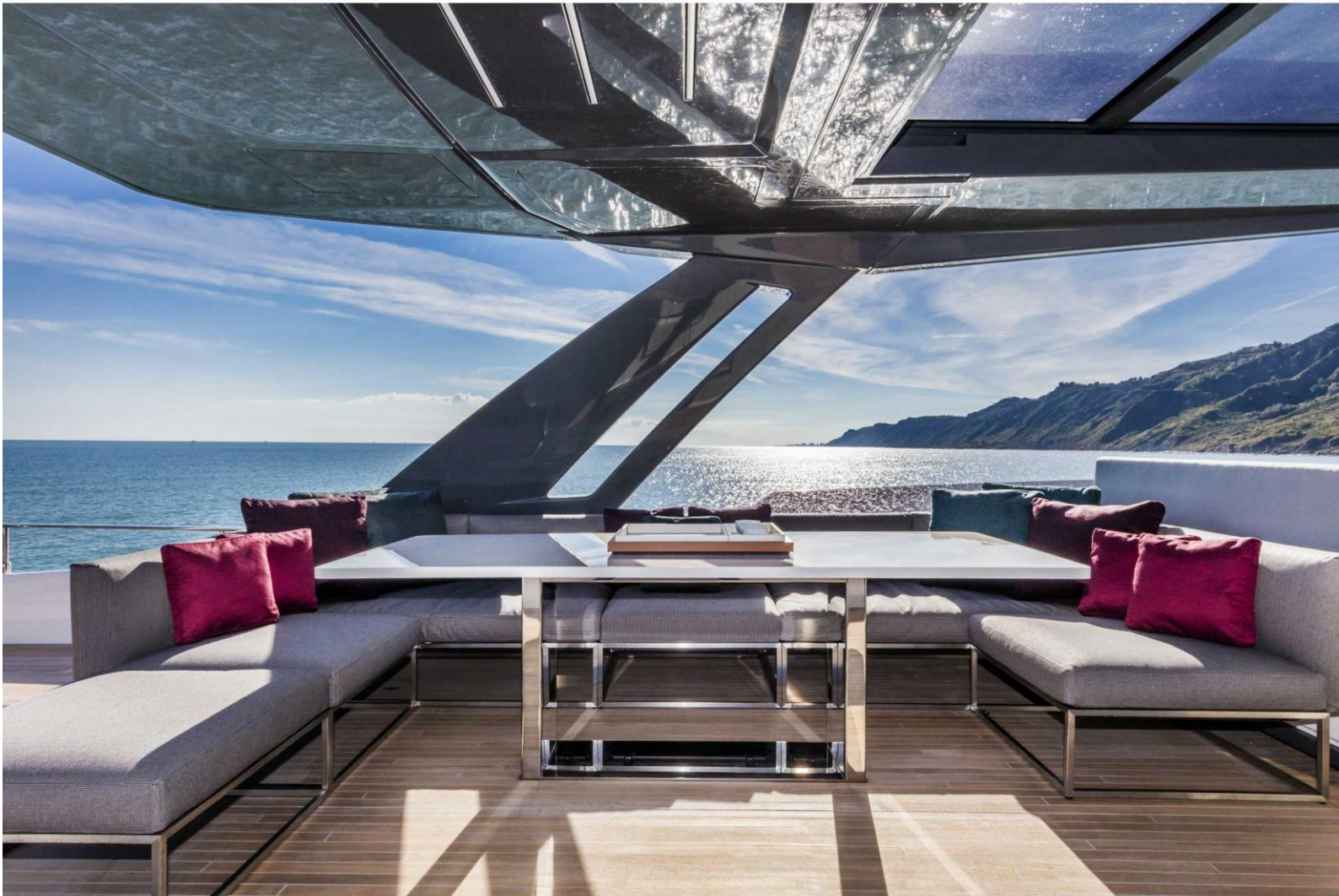
———— Ferretti 850 ————

Luxury, power and style combine in a model with the dynamic, flowing lines to entrance the eye. Like a penthouse surrounded by the sea, this magnificent flybridge offers bright, airy accommodation elegantly furnished with refined design.

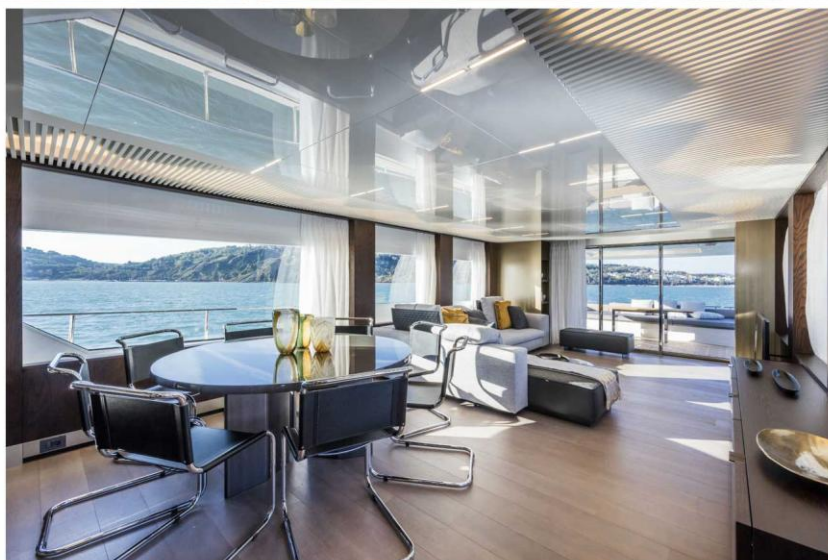
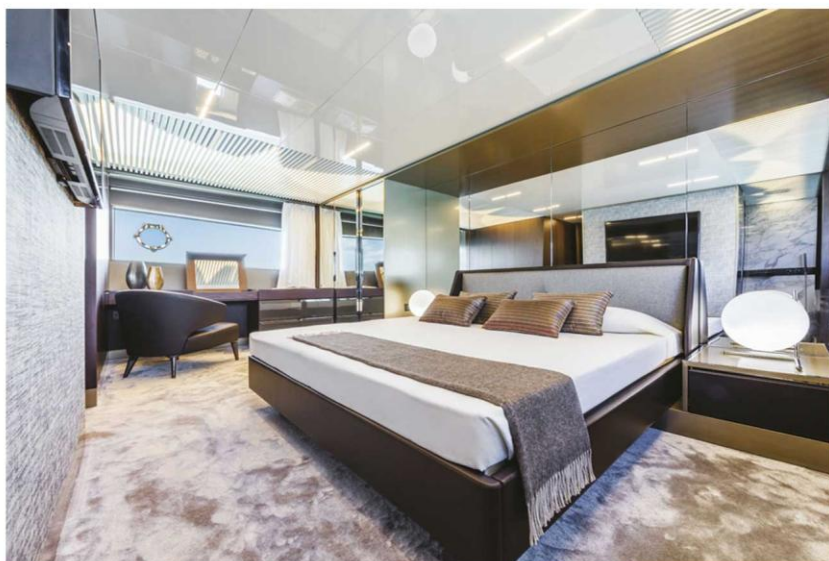
With external areas affording every conceivable comfort, there' s an idyllic equilibrium between inside and out. And at 26 metres long and with a hull length under 24, the new flybridge can be registered as a pleasure boat.



Exclusivity rules the waves. Spirited and seductive, the Ferretti Yachts 850 wins your heart at the very first glance with her angular flair and striking lines that radiate majesty and style. The two built-in windows with integrated portholes have a real streamlined verve, and their grand dimensions leave the interior awash with natural light and magnificent views.



The main deck enhances the dynamism of the overall design: a single glazed expanse cuts through the entire superstructure to complement the fore-and-aft hard top over the raised helm station.



The garage door tilts open with a special mechanism to reveal a beach area that eases below the water as a large submerged platform for guests to enjoy (and a handy way for the crew to manoeuvre the tender).



— FERRETTI GROUP —

Covered walls, floor-to-ceiling windows, billowy curtains and plenty of freestanding furnishings are the keys to a concept that is metropolitan yet liveable, ultracontemporary yet warm – and all in consummate Ferretti Yachts style.





 **FERRETTI**
YACHTS



LAYOUT



Profile A (Hardtop)



Profile B



Sun Deck



Main Deck



Lower Deck

TECHNICAL DATA

FERRETTI 850	MAN V12 – 1800 4 CABINS – 2 CREW	MAN V12 – 1900 4 CABINS – 2 CREW
LOA	26,14 [M] – 85 FT 9 IN	
LH	23,98 [M] – 78 FT 8 IN	
MAX BEAM	6,28 [M] – 20 FT 7 IN	
DRAFT	2 [M] – 6 FT 7 IN	
UNLADEN DISPLACEMENT	67.000 [KG] – 147,710 [LBS]	
LADEN DISPLACEMENT	77.500 [KG] – 170,858 [LBS]	
FUEL	6.750 [L] – 1,783 [US GAL]	
WATER	1.320 [L] – 349 [US GAL]	
PEOPLE ON BOARD	20	
ENGINE	MAN V 12 1800	MAN V 12 1900
MAX SPEED	29 [kn]	32 [KN]
CRUISE SPEED	26 [KN]	27 [KN]

Blackfish Marine

Customize your luxurious yacht life!

PHONE:

833-775-5476

604-669-8081

(Mon - Fri 9:30AM - 5:30PM)



WEBSITE

www.blackfishmarine.com

Yacht Sale

Yacht Charter

Driving training

Yacht Entertainment

Yacht Management

Maintenance


FERRETTI

Riva

PERSHING


MARQUIS

CARVER
YACHTS


SEALINE

BLACKFISH MARINE
LUXURY YACHT SALES